



Homelessness Prevention & Housing Continuum

St. Mary's Parish - October 6, 2025



10-Point Homelessness Prevention Plan

SCHC Master Plan



Housing ASAP

10-Year Strategy



Accessing Housing



COMMUNITY HOUSING

- Includes social housing and affordable housing, among other forms of housing provided by non-profits, cooperatives, and community-based organizations.
- Includes rent-geared-to-income (RGI) but may also include affordable housing options that aren't directly tied to income.
- Focuses on low-to-moderate income households and vulnerable populations; also provides supports that may serve a broader group of people.



SUPPORTIVE

- Supportive Housing is a type of community housing.
- Supportive Housing units can be provided by the government, non-profit, cooperative, or private providers.
- Refers to housing programs that have a combination of:

Housing Assistance

(e.g., rent-geared-to-income (RGI), or rent supplements)

+

Wraparound Support Services

(e.g., mental health supports, counselling, peer support, addictions support, or supports for activities of daily living)



HOUSING ASSISTANCE

- Help bridge the gap between what a household can afford and what the market rent costs.
- Includes Rent Supplements, Housing allowances and the Canada-Ontario Housing Benefit (COHB).
- Different funding streams determine if rent allowances are paid directly to the landlord or household.

Emergency Shelter



- The County of Simcoe has 9 emergency shelters throughout the Region
- Shelters provide short term accommodations and basic needs
- Emergency Shelters include supports throughout the County for Individuals and families experiencing homelessness.
- Specialized services also exist for women, youth, and other priority populations
- Staff can connect residents to case management, healthcare referrals and housing supports.

Supportive Rapid Rehousing Program

Supportive Rapid Rehousing Programs

- Target Groups:
 - Collingwood – seniors over 55
 - Orillia – youth aged 16-24
- Eligibility: By Names List, situationally homeless
- Program Duration: 6 Months
- Successful outcomes
- Rent subsidies (COHB)

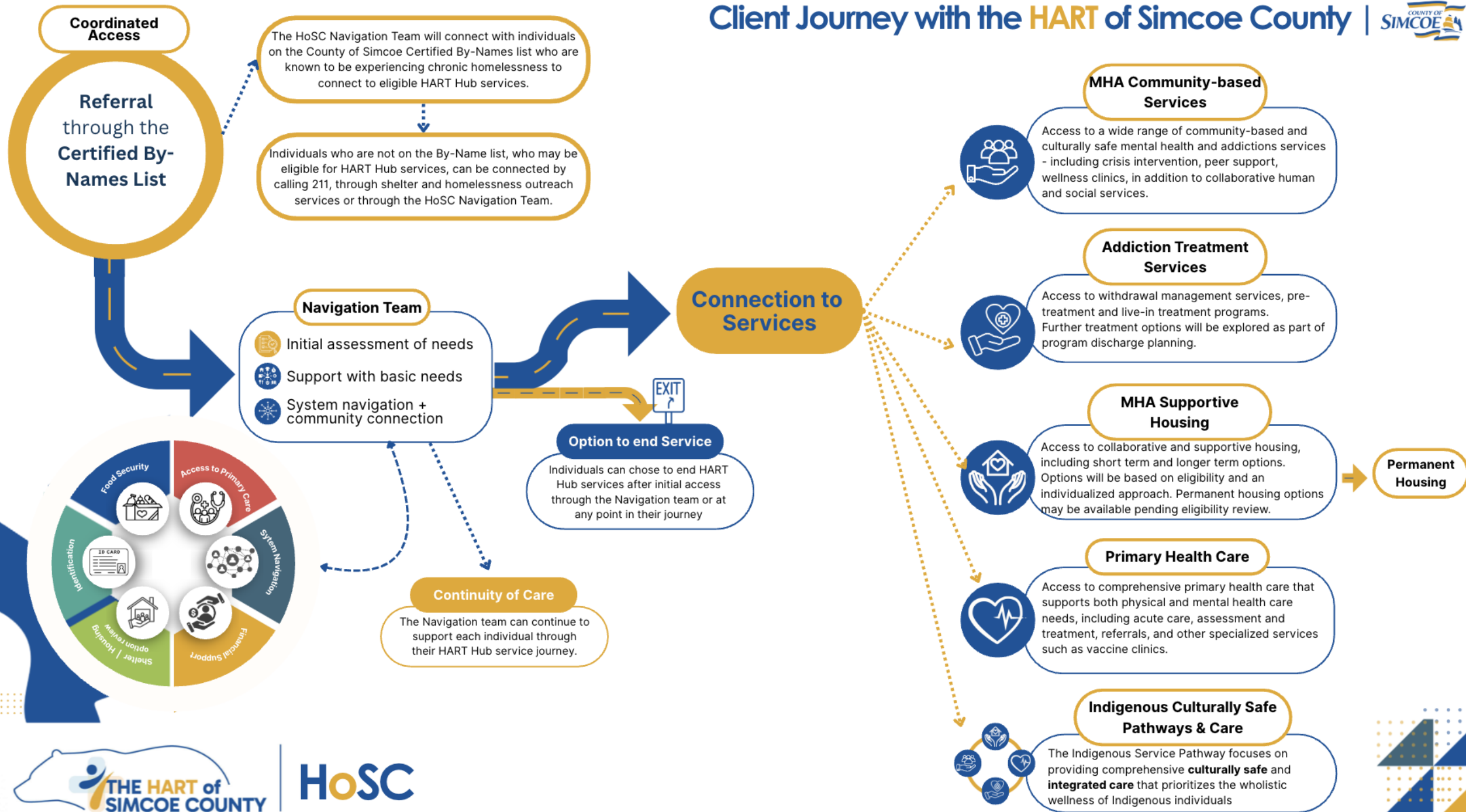


Addiction Treatment Pathways



HART Hub & Continuum of Care

- County partnership offering detox assistance; brief pre-screening for safety
- 18 non-medical withdrawal beds at RVH (only publicly funded program in area)
- Admits individuals actively using, intoxicated, or in early withdrawal
- Supportive & transitional housing link people from homelessness into stable housing
- Rapid Rehousing & Permanent Supportive Housing provide 24/7 wraparound care
- 7 domiciliary care providers support long-term recovery & disabilities





Thank You!

St. Mary's Parish - October 6, 2025

